

FED. AID DIST. NO.	STATE	FED. AID PROJ.	FISCAL YEAR	SHEET NO.	TOTAL SHEETS
5	Mo.			1	
DIV. NO.	COUNTY	ROUTE	SEC. NO.		
4	PLATTE	1	39A		

INDEX OF SHEETS

SHEET NO.	TITLE PAGE
2	TYPICAL CROSS SECTIONS OF IMPROVEMENT
3	PLAN AND PROFILE STATION 627+25 TO 637+00
4	" " " " 657+00 " 60+00
5	" " " " 60+00 " 90+00
6	" " " " 90+00 " 120+00
7	" " " " 120+00 " 150+00
8	" " " " 150+00 " 180+00
9	" " " " 180+00 " 210+00
10	" " " " 210+00 " 240+00
11	" " " " 240+00 " 252+53.7
12 TO 32 INCL.	CROSS SECTIONS

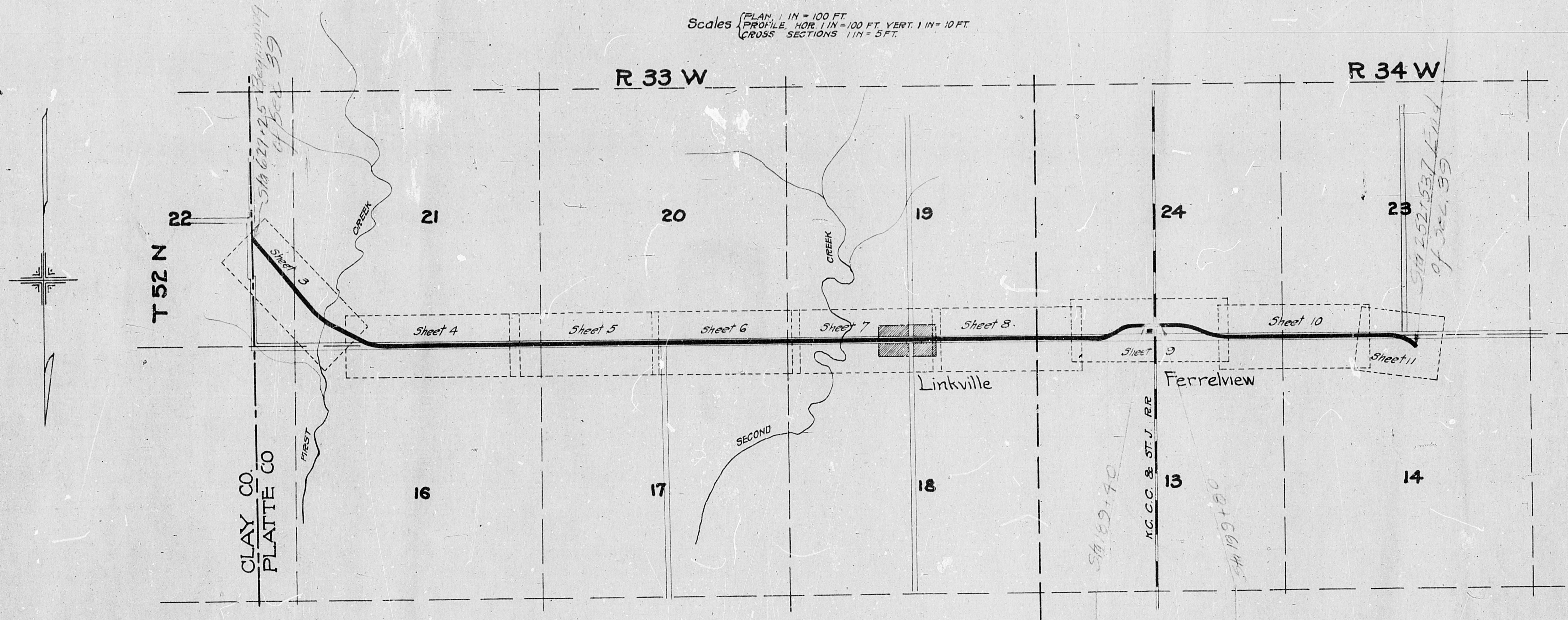
MISSOURI STATE HIGHWAY DEPARTMENT

PLAN AND PROFILE OF PROPOSED STATE ROAD

PLATTE COUNTY

FROM CLAY COUNTY LINE TOWARD PLATTE CITY
VIA FERRELVIEW

Scales { PLAN 1 IN. = 100 FT.
PROFILE HOR. 1 IN. = 100 FT. VERT. 1 IN. = 10 FT.
CROSS SECTIONS 1 IN. = 5 FT.



CONVENTIONAL SIGNS

COUNTY LINE	---	CULVERTS	—
CITY OR VILLAGE	----	POWER POLE	—
TOWNSHIP LINE	-----	TELEPHONE OR TEL. POLE	—
SECTION LINE	-----	HEDGE	—
FENCE LINE	-----	GROUND ELEVATION	DATUM
UNFENCED PROPERTY	-----	GRADE ELEVATION	GRADE LINE
RIGHT OF WAY LINE	-----	SURFACE LINE	0.50%
TRAVELED WAY	-----	GRADE LINE	0.50%
GUARD RAIL	-----		
RAILROADS	-----		
BASE OR SURVEY LINE	-----		

LAYOUT MAP

Scale 4" = 1 mile.

Net length = 25383.9ft = 4.8075 mile
Length of Exception = 0.182 mi
Length of Sec 39 = 4.6255 mi

EXCEPTIONS
None

Sta 189+40 to 341+98.157

EQUATIONS

675 + 88.8 = 47 + 33.6

SUBMITTED

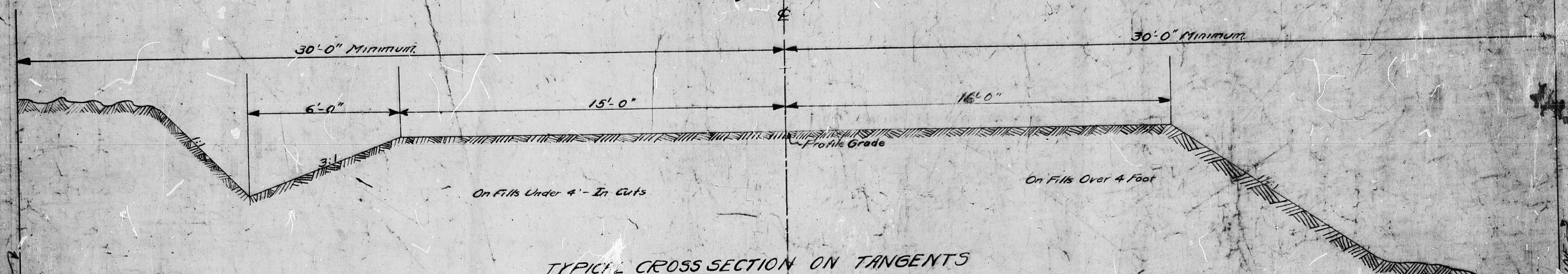
STATE HIGHWAY ENGINEER
RECOMMENDED FOR APPROVAL

DIST. ENGR. DISTRICT NO. 5
RECOMMENDED FOR APPROVAL

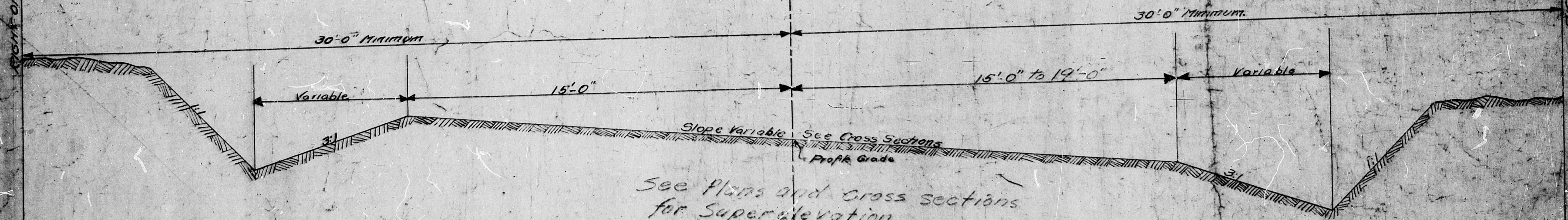
CHIEF ENGR. BUREAU OF PUB. ROADS
APPROVED

DIRECTOR, BUREAU OF PUB. ROAD

TYPICAL CROSS SECTION
 OF
30 FT GRADED EARTH ROADWAY
 Scale 1"=2'



TYPICAL CROSS SECTION ON TANGENTS



TYPICAL CROSS SECTION ON CURVES

MISSOURI STATE HIGHWAY COMMISSION

ESTIMATE SHEET

County of PlatteLength 0.197 milesDescription of paving 30' Graded EarthPrepared by L. M. H.Date 4-7-1926Name of road Ferrelview Under pass

FED. ROAD DIST. NO.	STATE PROJECT	FED. AID YEAR	FISCAL YEAR	SHEET NO.	TOTAL SHEETS
5	MO.	1925	26	1	1
DIV. NO.	COUNTY	ROUTE	SUB. NO.		
9	Platte	1	39-A		

Excavation

Station

Earth

Under R.R. Tracks

Solid Rock

189+90

5764 ✓

1903 ✓

141 ✓

189+80

Total

5764 ✓

1903 ✓

141 ✓

Pipe Culverts V.C.P.

Station

Size

Length

Kind

190+00

15"

30'

Side Road Rt. ✓

194+50

15"

17½'

Farm Exp. Lt. ✓

195+50

15"

30'

Side Road Rt. ✓

Total

77½' ✓

Summary

Item

Description

Unit

Quantity

70

Earth Roadway Excavation Cu. Yd. 5764 ✓

70

Excavation Under Tracks Cu. Yd. 1903 ✓

50

15" V.C.P. Pipe Culverts Lin. Ft. 77½ ✓

70

Solid Rock Excavation Cu. Yd. 141 ✓

Bridge at Sta. 189+80

53

Removal of Old Bridge Unit 1 ✓

594

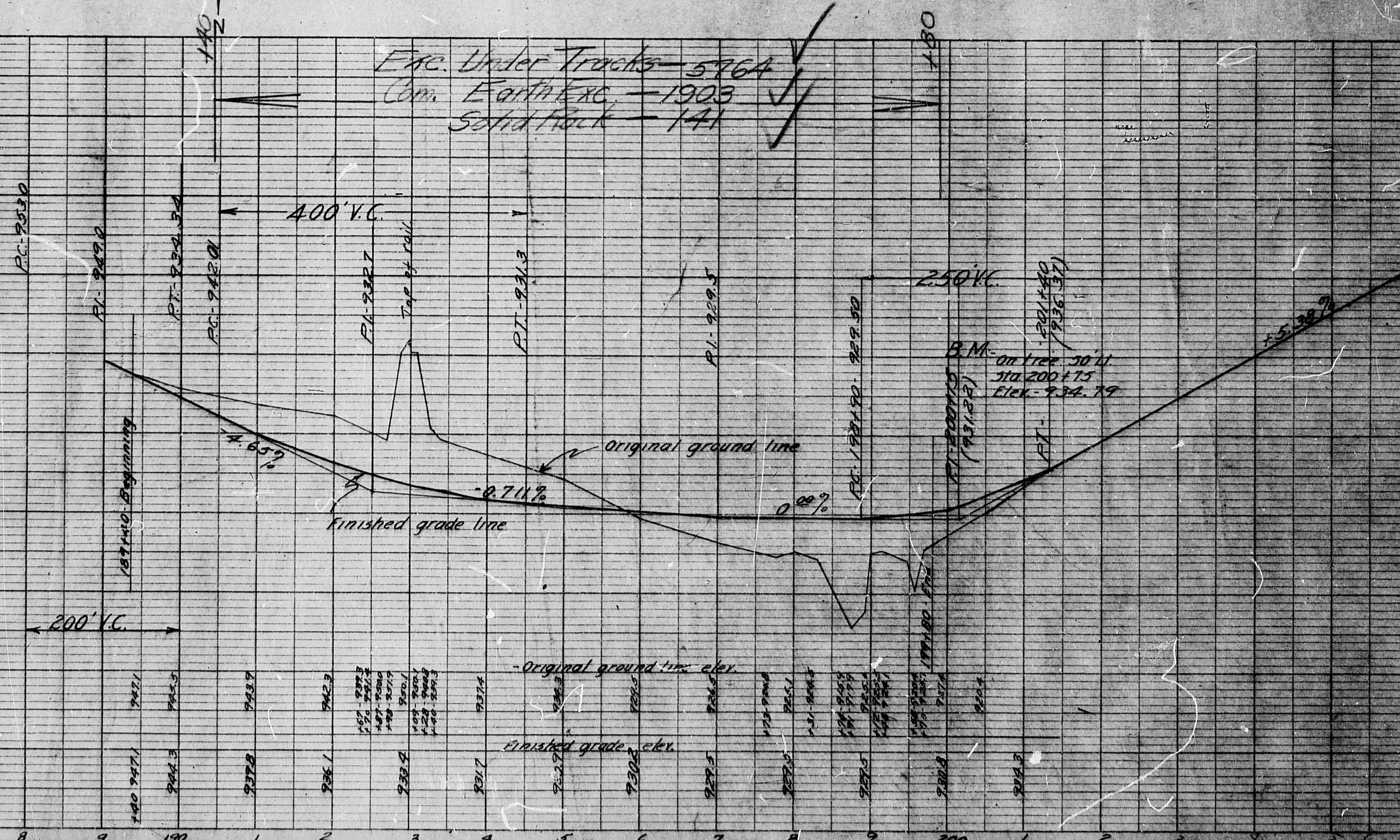
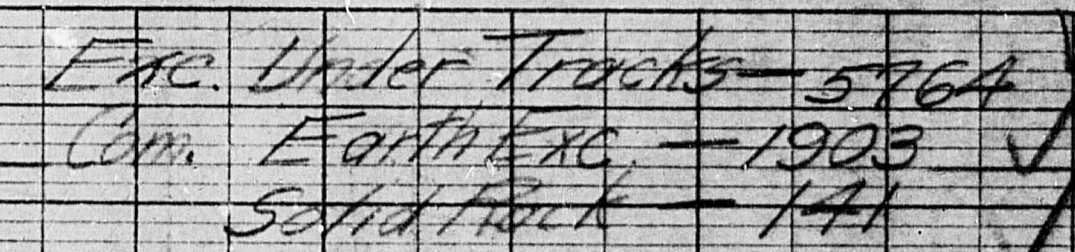
Class B Concrete Mass Cu. Yd. 175.0 ✓

60

Reinforcing Steel, pattern Lbs. 15370 ✓

Final Plans Checked
May 10, 1926
Geo. D. Cunningham

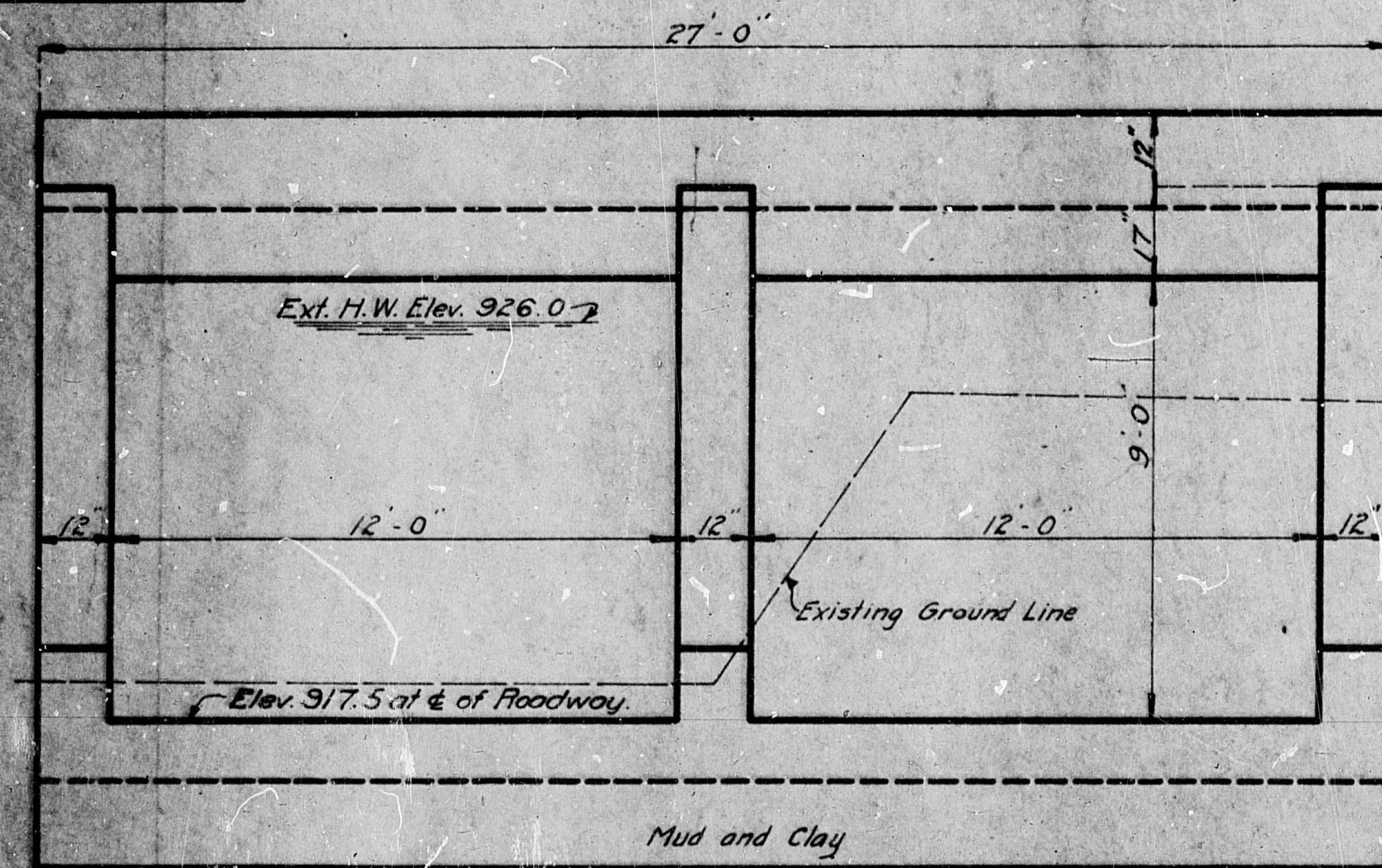
PROFILE	SURVEYED	BY	DATE
NOTE BOOK	PLOTTED		
NO.	GRADES CHECKED		
	B. M'S. NOTED		
	STRUCTURE NOTATIONS CH'KD		



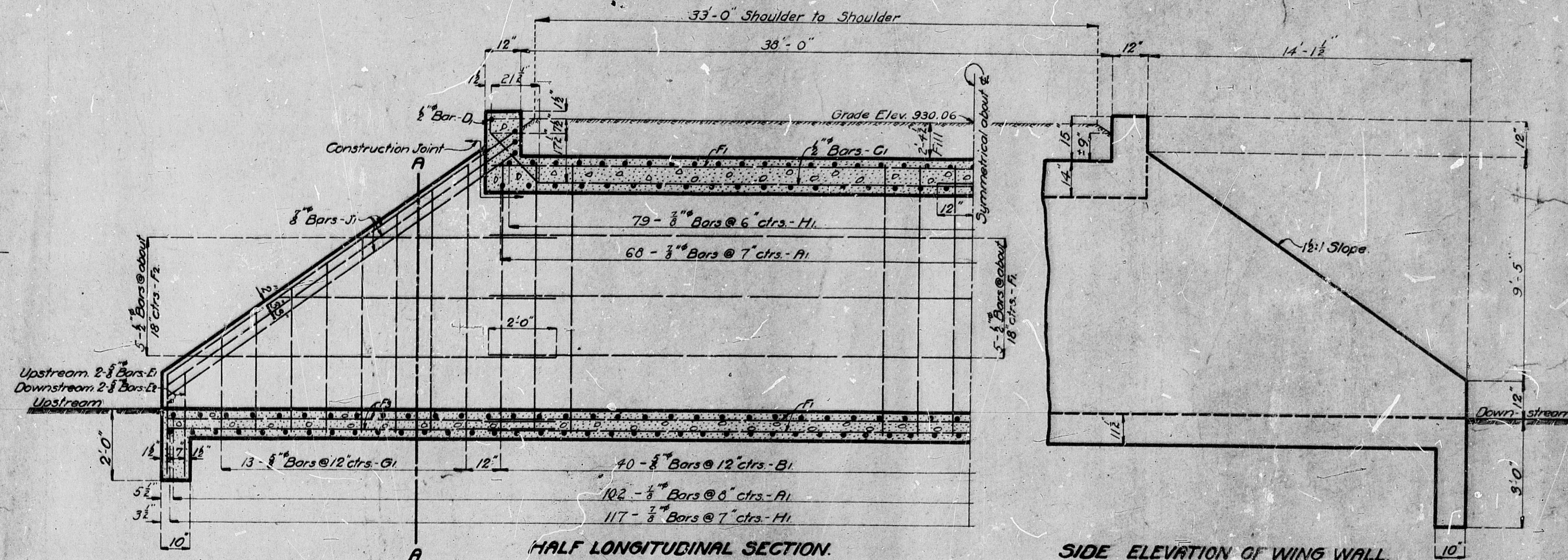
MISSOURI STATE HIGHWAY DEPARTMENT

DATE	NO.	BY	NO.	NO.	NO.	NO.	NO.	NO.	NO.
5	MO	R.1-S.38	1925	29					

REVISIONS.	By	No.	Description

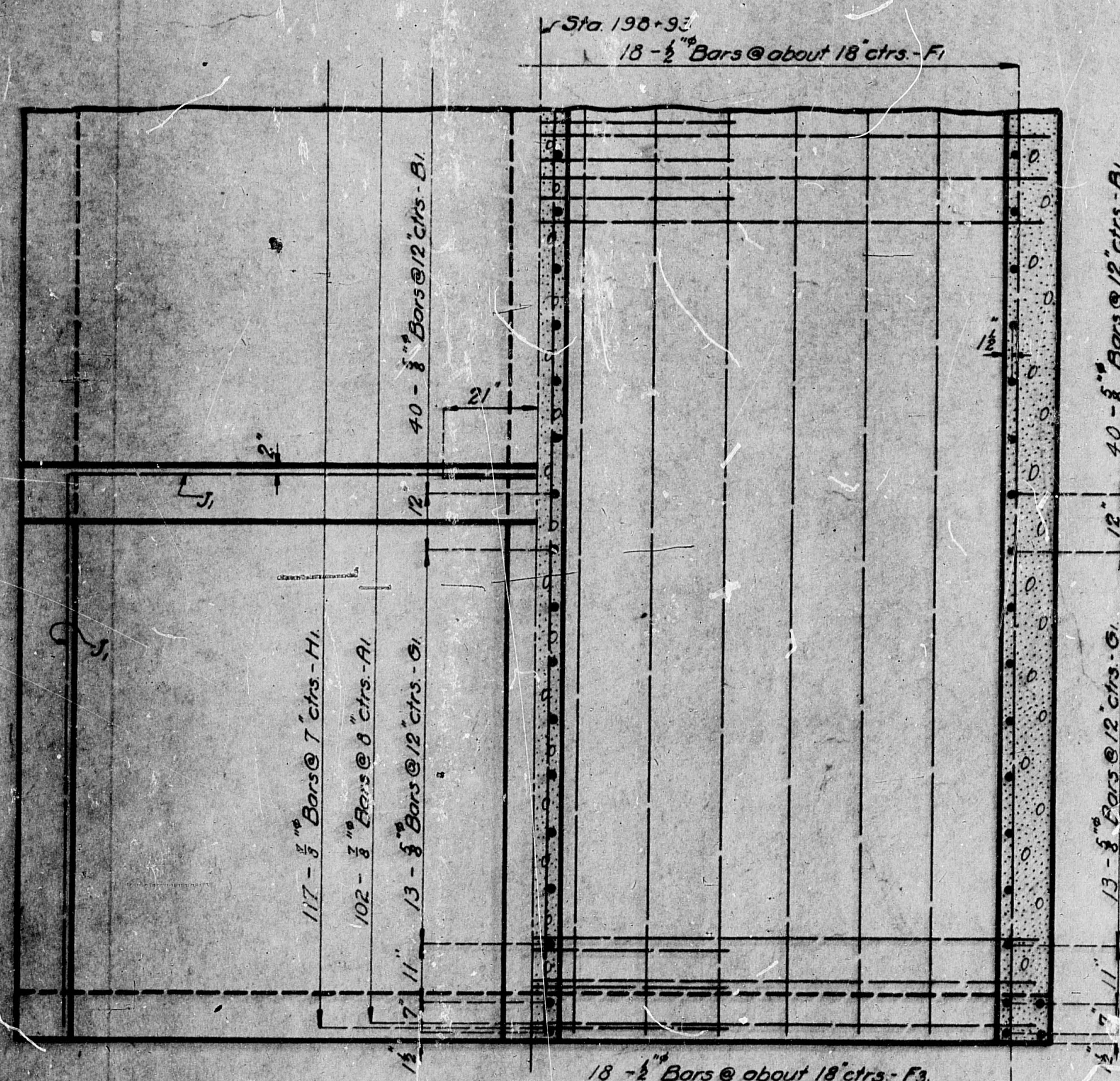


END ELEVATION.



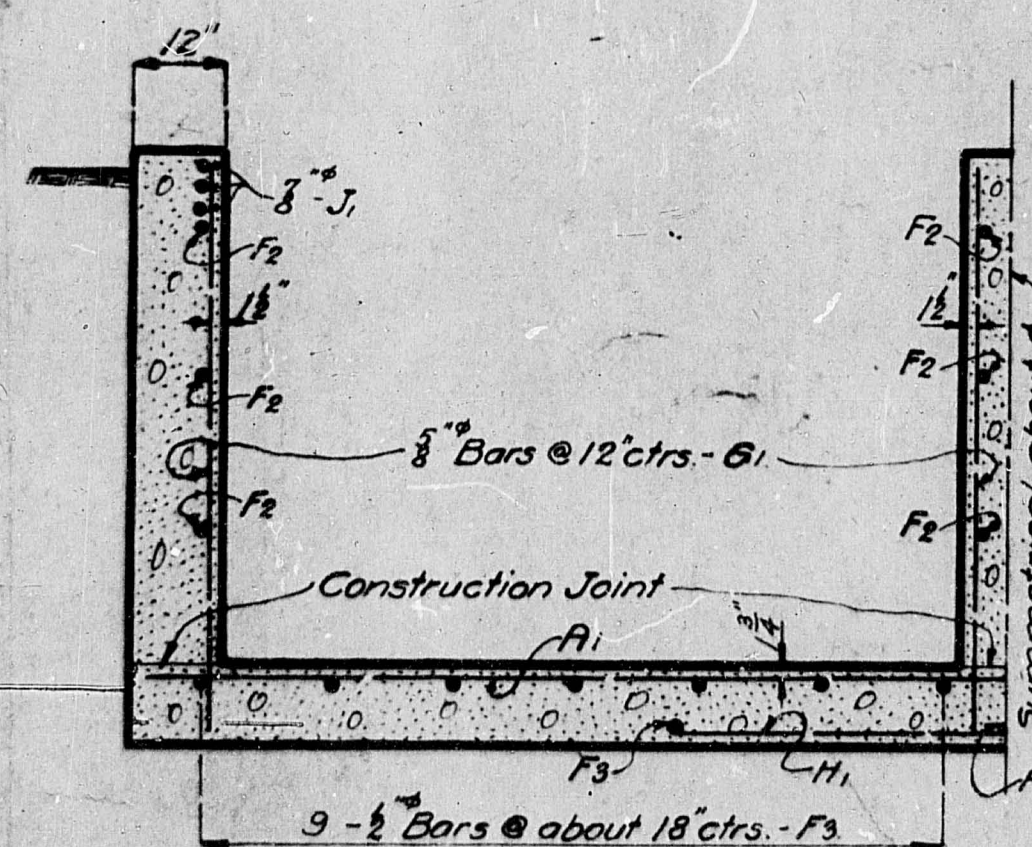
HALF LONGITUDINAL SECTION.

SIDE ELEVATION OF WING WALL.

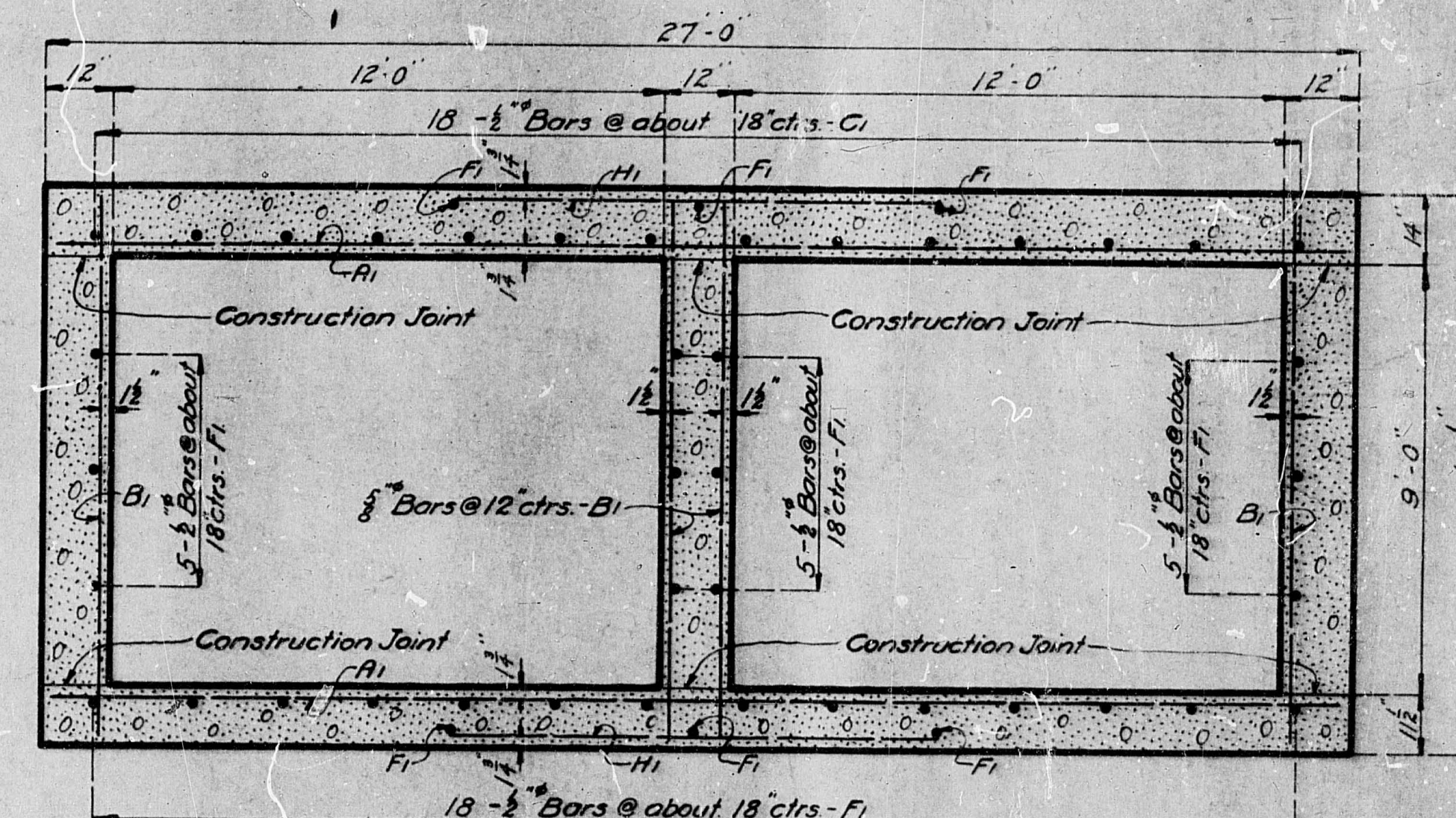


PART PLAN.

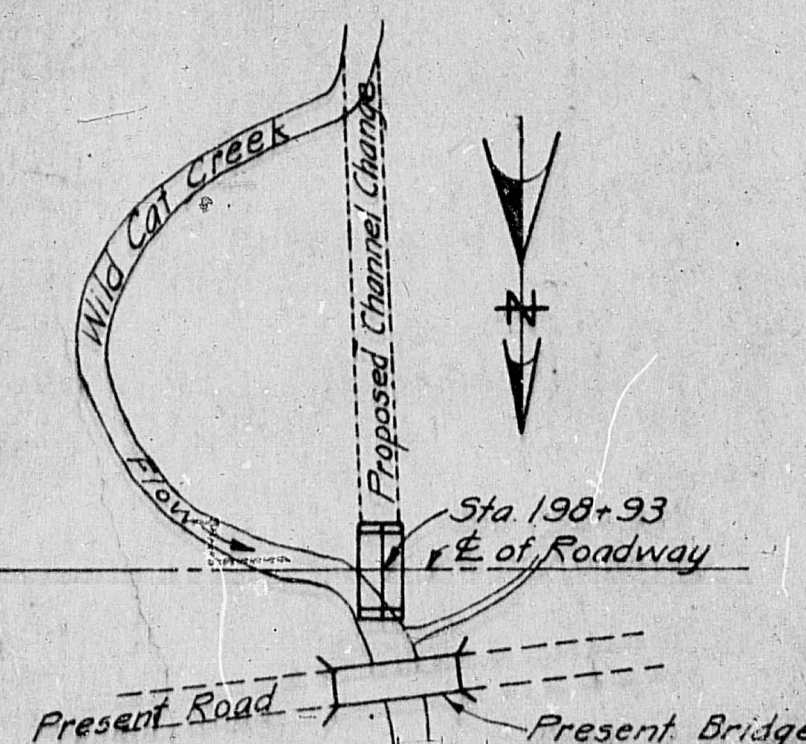
PART HORIZONTAL SECTION.



HALF SECTION A-A.



SECTION THRU BOX.



LOCATION SKETCH

REINFORCING STEEL				
No.	Size	Length	Mark	
170	1/2"	26'-9"	A1	
160	1/2"	10'-9"	B1	
36	1/2"	22'-0"	C1	
2	1/2"	26'-9"	D1	
12	1/2"	2'-9"	E1	
12	1/2"	3'-9"	E2	
44	1/2"	39'-9"	F1	
20	1/2"	22'-0"	F2	
42	1/2"	16'-0"	F3	
52	1/2"	13'-6"	G1	
196	1/2"	8'-0"	H1	
12	1/2"	32'-0"	J1	
Cutting Diagrams				
5 Bars F2. 13 Bars G1. Cut 20 Bars. Cut 52 Bars.				

GENERAL NOTES.
 All concrete to be 1:2:4 mix.
 Exposed edges to be beveled 1/4", where no other bevel is noted.
 Cost of excavation to be included in price bid for concrete.

B.M. Elev. 934.75 Spike in root of 8" Elm
 50 Ft. Sta. 207+75.

ESTIMATED QUANTITIES.		
Item.	Units.	Total.
Concrete 1:2:4 mix.	Cu. Yds.	175.0
Reinforcing Steel.	Lbs.	18370

DOUBLE 12'-0" x 9'-0" BOX CULVERT
 STATE ROAD FROM KANSAS CITY TO PLATTE CITY
 ABOUT 1/4 MI. WEST OF FERRELVUE
 PROJECT NO. R.1-S.38 STA. 198+93

PLATTE COUNTY

Submitted by *J. W. D. 7-7-25*
 Approved by *B. H. P. 7-13-25*
 Bridge Engineer
 Chief Engineer

Assembled May 1925 By W.S.M.
 Checked June 1925 By F.R.G.
 Feb. 1925 By J.T.

FED. AID DIST. NO.	STATE	FED. AID PROJ. YEAR	SHEET NO.	TOTAL SHEETS
5	MO.		1	1
DIV. NO.	COUNTY	ROUTE	SEC. NO.	
4	PLATTE	1	39	

INDEX OF SHEETS

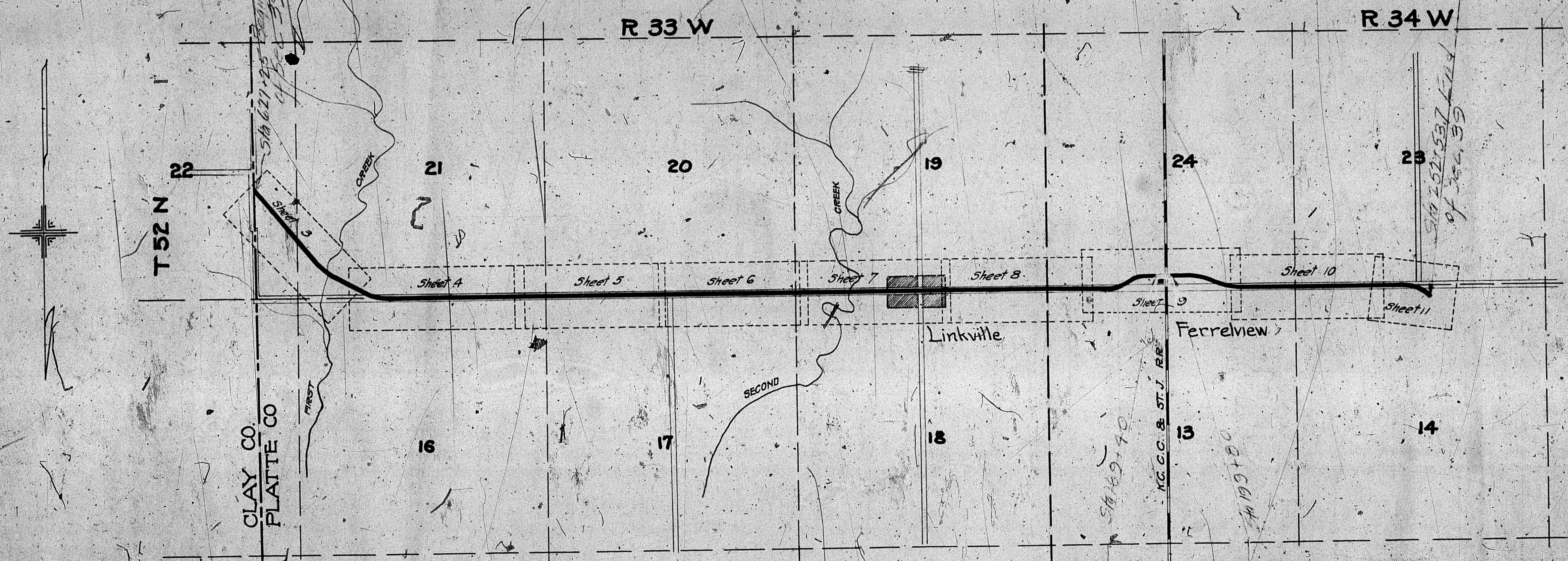
SHEET NO.	TITLE PAGE
2	TYPICAL CROSS SECTIONS OF IMPROVEMENT
3	PLAN AND PROFILE STATION 627+25 TO 657+00
4	657+00 - 60+00
5	60+00 - 90+00
6	90+00 - 120+00
7	120+00 - 150+00
8	150+00 - 180+00
9	180+00 - 210+00
10	210+00 - 240+00
11	240+00 - 252+53.7
12 TO 32	INCL. CROSS SECTIONS

MISSOURI STATE HIGHWAY DEPARTMENT PLAN AND PROFILE OF PROPOSED STATE ROAD

PLATTE COUNTY

FROM CLAY COUNTY LINE TOWARD PLATTE CITY
VIA FERRELVUE

Scales: PLAN, 1 IN. = 100 FT.
PROFILE, HOR. 1 IN. = 100 FT. VERT. 1 IN. = 10 FT.
CROSS SECTIONS 1 IN. = 5 FT.



CONVENTIONAL SIGNS

COUNTY LINE	CULVERTS
CITY OR VILLAGE	POWER POLE
TOWNSHIP LINE	TELEPHONE OR TEL. POLE
SECTION LINE	HEDGE
FENCE LINE	
UNFENCED PROPERTY	GROUND ELEVATION
RIGHT OF WAY LINE	GRADE ELEVATION
TRAVELED WAY	SURFACE LINE
GUARD RAIL	GRADE LINE
RAILROADS	
BASE OF SURVEY LINE	

LAYOUT MAP

Scale 4" = 1 mile.

Net length 25383.9ft = 4.8075 mile
Length of Exception 1.187
Length of Sec 39 4.295

A1 339A
Length 0.197
MI

EXCEPTIONS None

Sta 189+20 to Sta 198+15

EQUATIONS

675+88.8 = 47+33.5

SUBMITTED

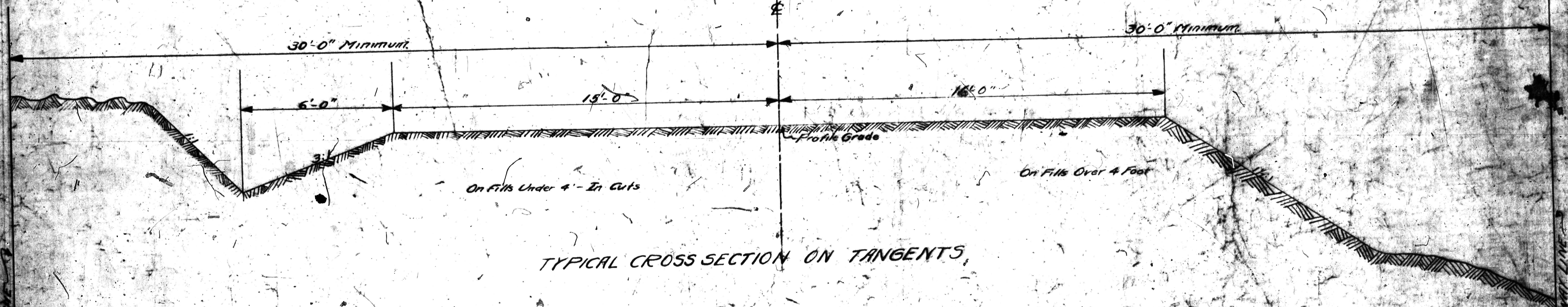
STATE HIGHWAY ENGINEER
RECOMMENDED FOR APPROVAL

DIST. ENGR. DISTRICT NO. 5
RECOMMENDED FOR APPROVAL

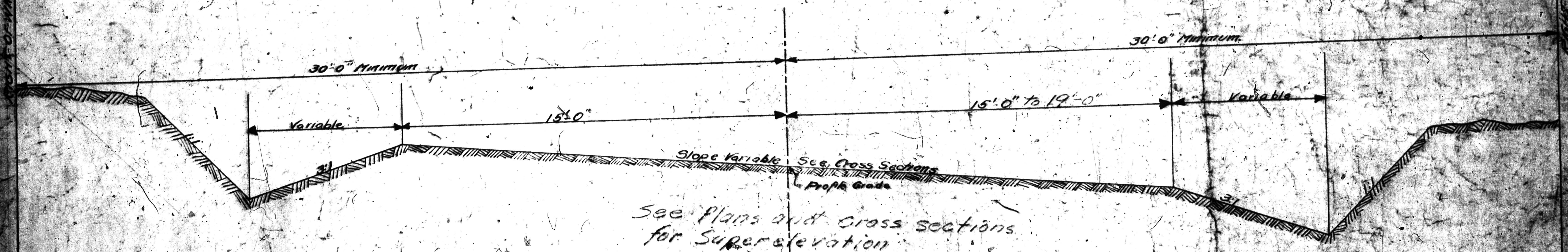
CHIEF ENGR. BUREAU OF PUB. ROADS
APPROVED

DIRECTOR, BUREAU OF PUB. ROADS

TYPICAL CROSS SECTION
OF
30 FT GRADED EARTH ROADWAY
Scale 1" = 2'



TYPICAL CROSS SECTION ON TANGENTS



See Plans and Cross Sections
for Super-elevation

TYPICAL CROSS SECTION ON CURVES

MISSOURI STATE HIGHWAY COMMISSION

ESTIMATE SHEET

County of PlatteLength 0.197 milesDescription of paving 30' Graded EarthPrepared by L. M. H.Date 4-7-1926Name of road Facelrien Under pass

STATE	FED. AID	FISCAL	SHEET	NO.
MO.		1926	1-2	
DIV. NO.	COUNTY	ROUTE	SHEET NO.	
4	Platte	1	34-7	

Excavation

Station

Earth

Under R.R.
Tracks

Solid Rock

189+70

5764

1908

141

189+80

Total

5764

1909

141

PIPE CULVERTS V.C.P.

Station

Size

Length

Kind

190+00

15"

30'

Side Road R.R.

194+50

15"

17 1/2'

Farm Ent. Lt.

195+50

15"

30'

Side Road R.R.

Total

77 1/2'

Summary

Item

Description

Unit

Quantity

70

Earth Retaining Foundation

Cu Yd.

5764

70

Excavation Under Tracks

Cu Yd.

1908

50

15" V.C.P. for Culverts

Lin. Ft.

77 1/2'

70

Solid Rock Foundation

Cu Yd.

141

Bridge at Sta. 189+70

53

Removal of Old Bridge

Cu Yd.

100

50

Clearing & Grading

Cu Yd.

100

60

Reinforcing Steel

Cu Yd.

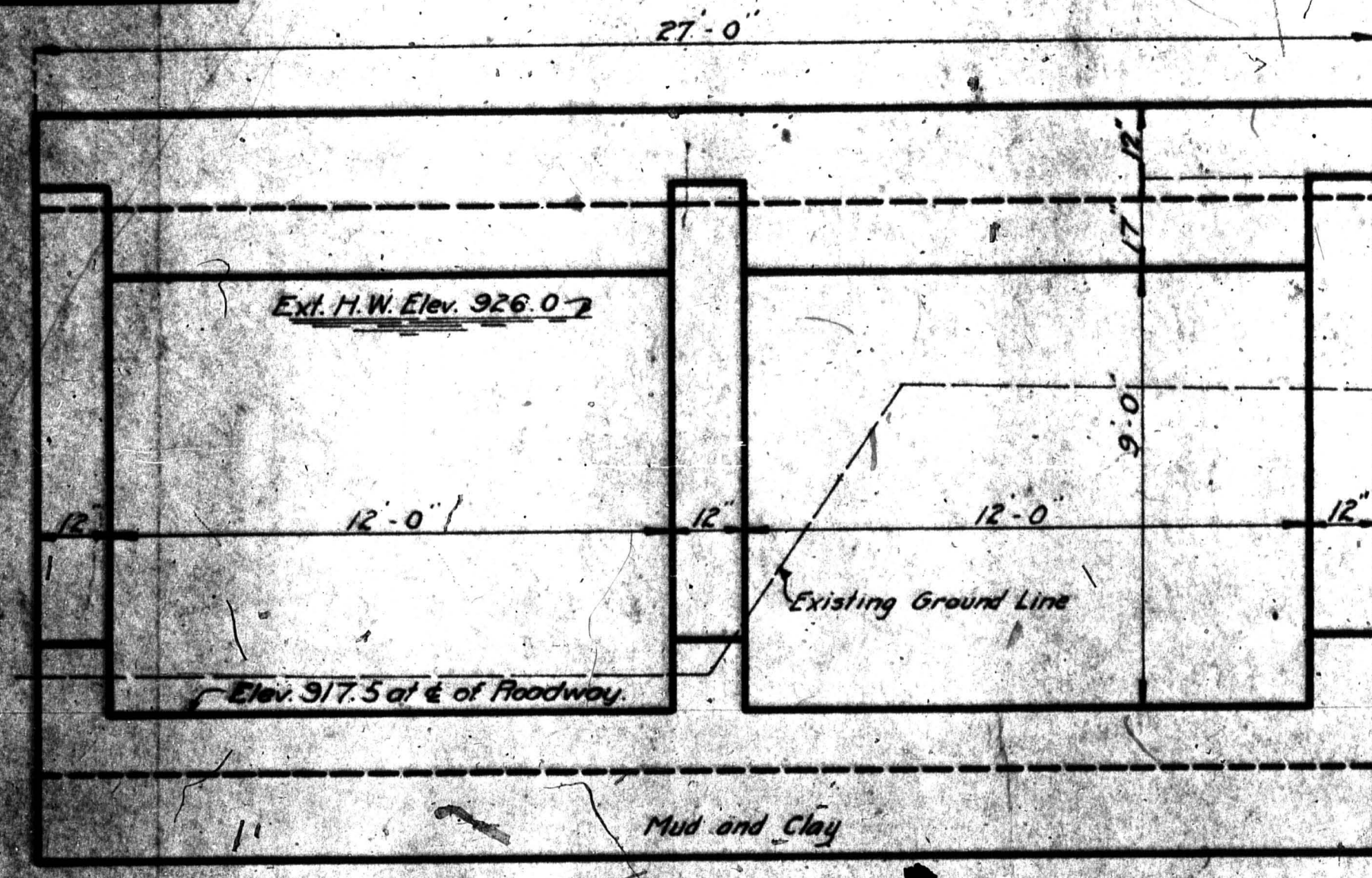
100

Final Plans Checked
May 10, 1926
L. M. H.

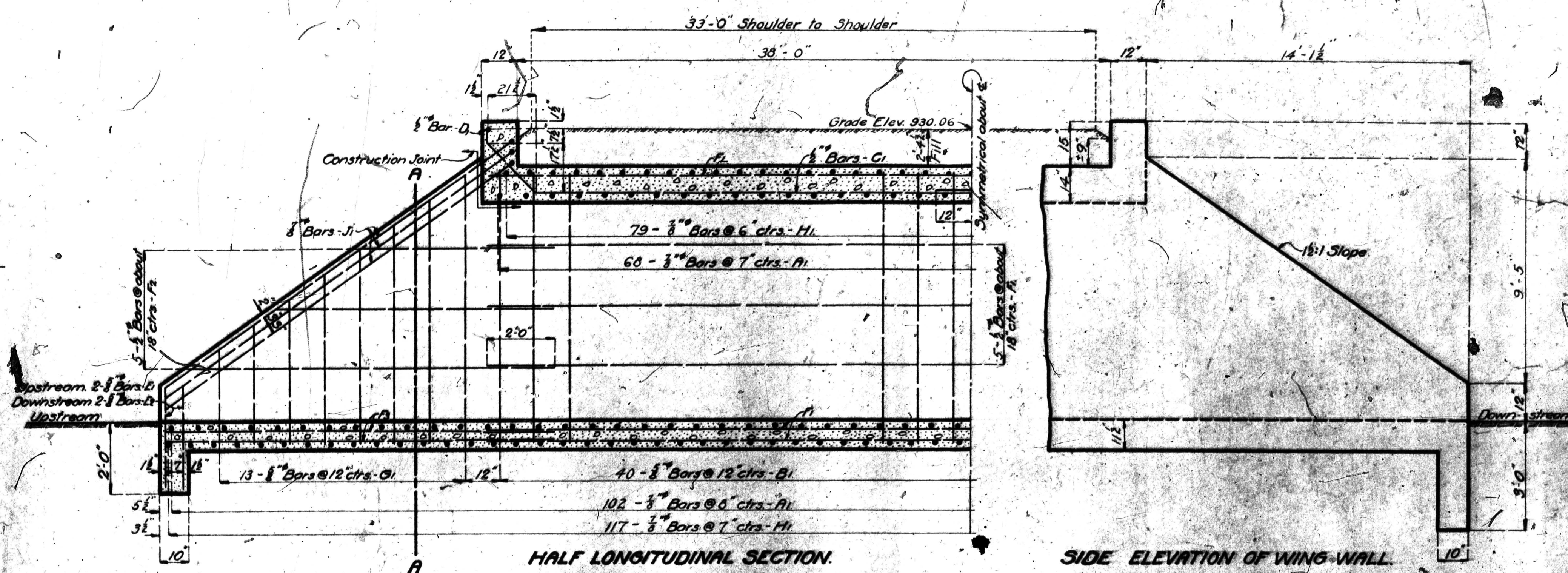
MISSOURI STATE HIGHWAY DEPARTMENT

DATE NO. 5 NO. 1-5-38 1938 29

REVISIONS.

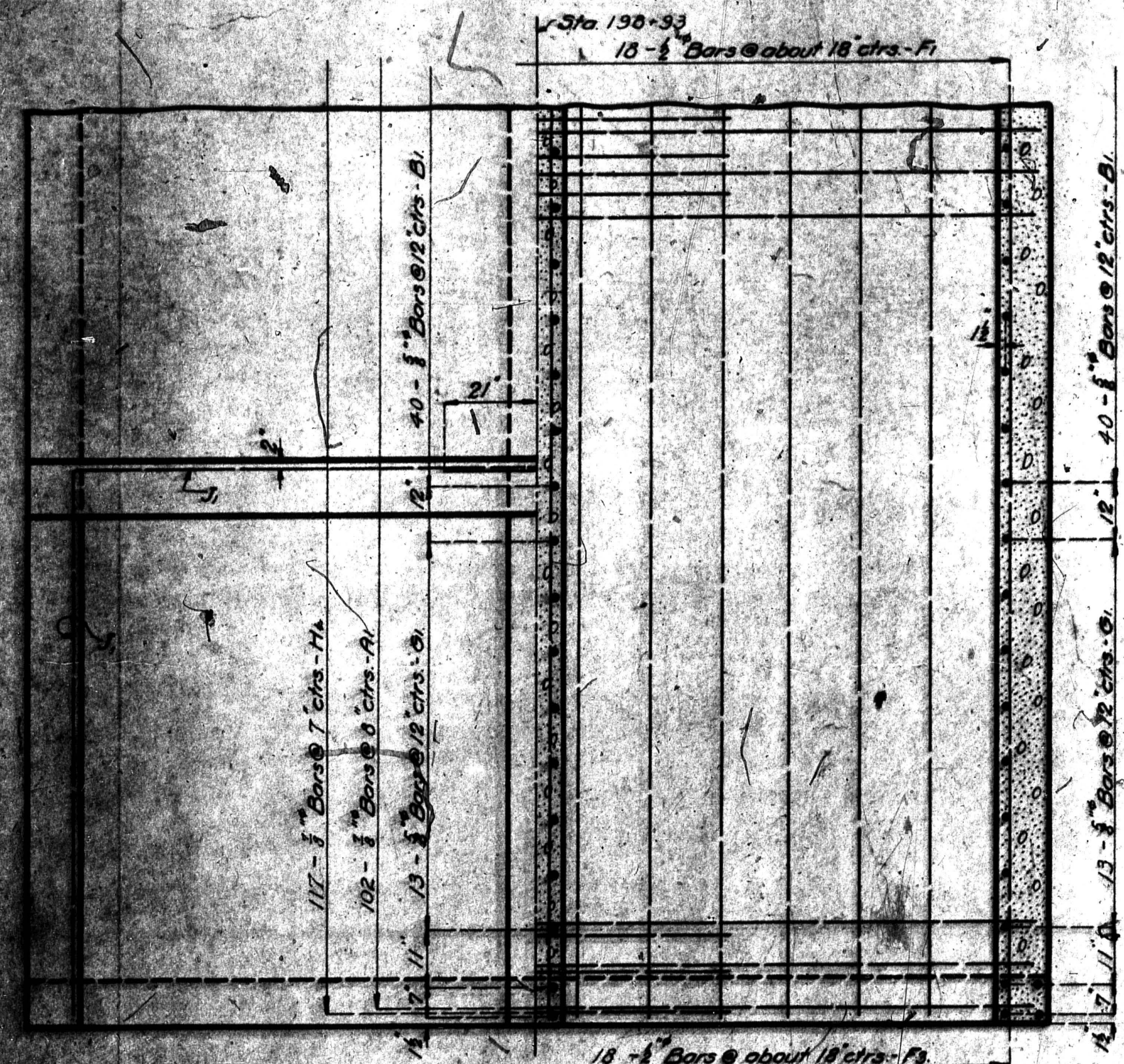


END ELEVATION.



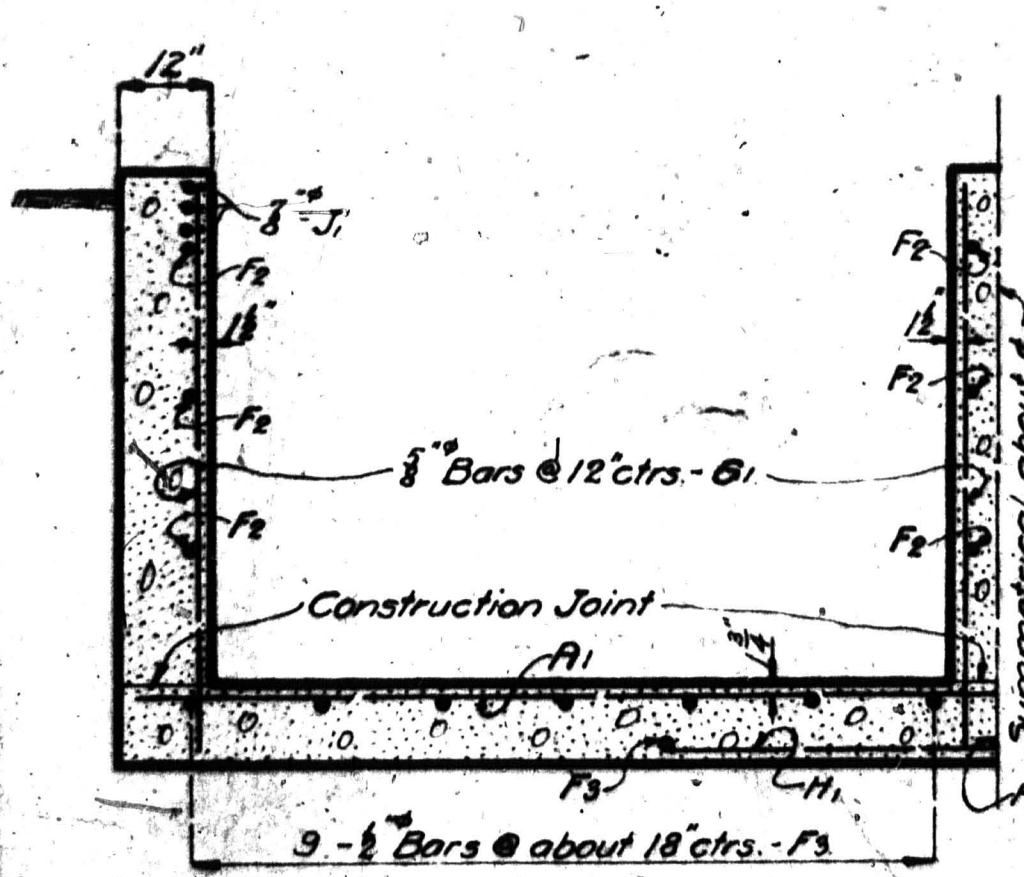
HALF LONGITUDINAL SECTION.

SIDE ELEVATION OF WING-WALL.

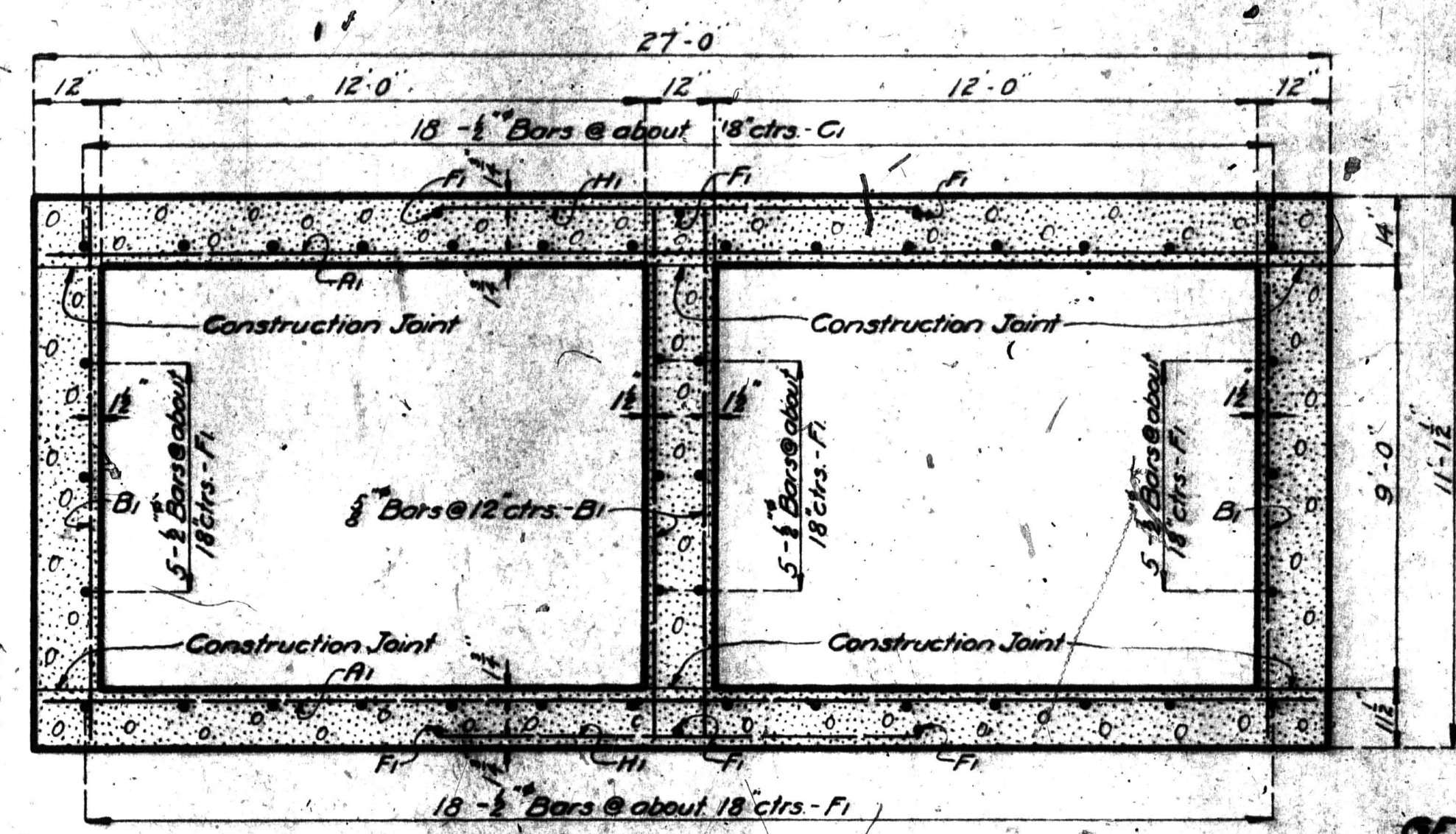


PART PLAN.

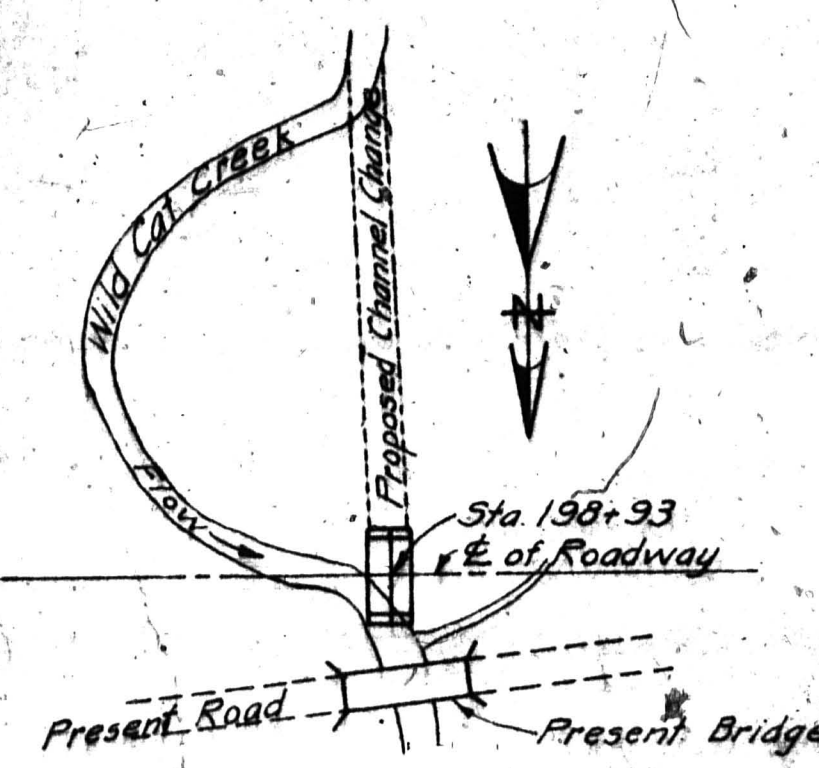
PART HORIZONTAL SECTION.



HALF SECTION A-A.



SECTION THRU BOX.



LOCATION SKETCH

No.	Size	Length	Mark
170	3/8"	26'-9"	A1
160	3/8"	10'-9"	B1
36	3/8"	22'-0"	C1
2	3/8"	26'-9"	D1
12	3/8"	2'-9"	E1
12	3/8"	3'-9"	E2
44	3/8"	30'-9"	F1
20	3/8"	22'-0"	F2
42	3/8"	16'-0"	F3
52	3/8"	13'-6"	G1
196	3/8"	8'-0"	H1
12	3/8"	32'-0"	J1

Cutting Diagrams.	
5 Bars F1	13 Bars G1
Cut 20 Bars	Cut 52 Bars

GENERAL NOTES:
 All concrete to be 1:2:4 mix.
 Exposed edges to be beveled 1/4" where no other bevel is noted.
 Cost of excavation to be included in price bid for concrete.

B.M. Elev. 934.79 Spike in roof of 8' Elm
 50' Rt. Sta. 200+75

ESTIMATED QUANTITIES.		
Item	Units	Total
Concrete 1:2:4 mix	Cu Yds.	175.0
Reinforcing Steel	Lbs.	18370

DOUBLE 12'-0" x 9'-0" BOX CULVERT
 STATE ROAD FROM KANSAS CITY TO PLATTE CITY
 ABOUT 1/4 MI. WEST OF FERRELVILLE
 PROJECT NO. R.1-S.38 STA. 192+93

PLATTE COUNTY

Submitted by *[Signature]* 7-7-38
 Bridge Engineer
 Approved by *[Signature]* 7/12/38
 Chief Engineer

Assembled May 1935 by N.S.M.
 Checked June 1935 by E.R.G.
 Date 1935 by J.T.